

Research Paper # 2

Rubric

due date: _____

Name: _____ Class Period: _____

Works Cited Page *must be typed*

Required 10 sources used correctly in paper; all sources on works cited appear in paper _____ of 10

Note cards/ Copies *write in blue/ black ink*

Sufficiency of Notes/ Research/ Copies of sources _____ of 10
Minimum of 75 cards (it takes more than 120 to write a good paper)

Thesis Statement *must be typed*

Appropriate, unified, limited, and specific _____ of 10
Must be typed on outline page/ intro paragraph

Topic Outline *must be typed*

Correct Harvard form, workable, based on research and paper requirements _____ of 10

Paper – *must be typed.*

Development of Thesis

Sufficient *(must be 8 pages that completely address all areas of paper/topic)* _____ of 10

Transitions _____ of 10

Credible _____ of 10

Cited _____ of 10

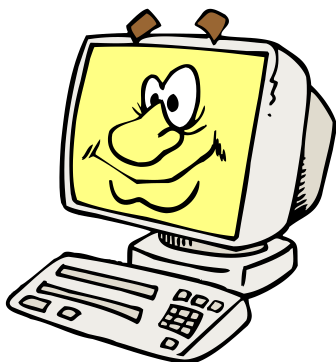
Coherence _____ of 10

Write like this is the final version. Make it perfect!

Introduction _____ of 5

must include thesis statement

Conclusion _____ of 5



Total points _____ of 100

Counts as 200 points for AP Lit and Comp

- ★ Margins must be 1 inch. ★ Font must be 12 pt. Times or Arial ★ Follow rules in writing packet ★ Avoid dead words
- ★ Last name then page number, upper right corner ★ 4- line heading, upper left corner ★