

THE BRITISH MUSEUM

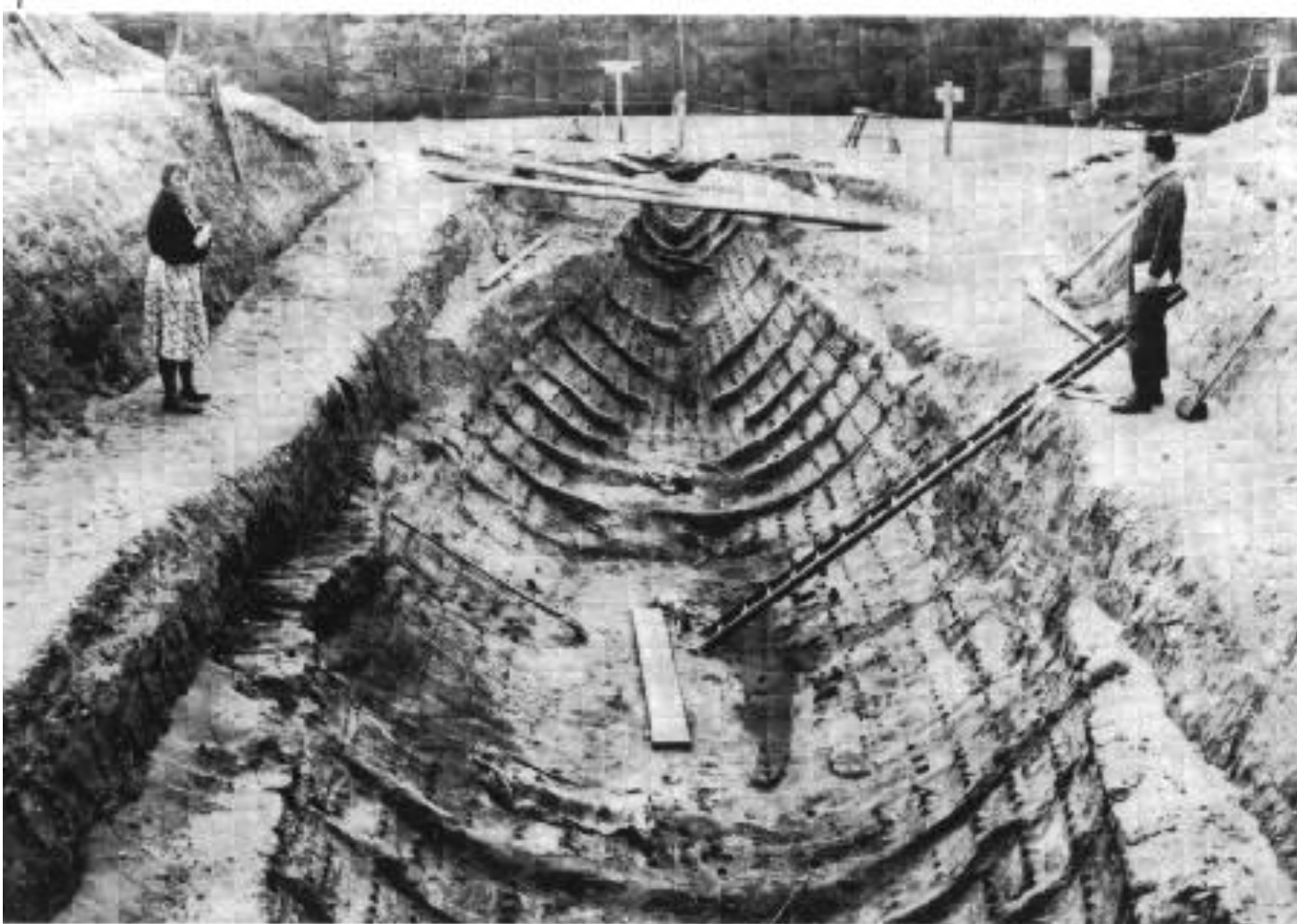
Sutton Hoo

Anglo-Saxon ship
burial





Aerial view of the Sutton Hoo burial site. Mound 1 is in the center of the photograph closest to the trees.



Sutton Hoo Ship Burial



Photograph of excavation of Mound 1 at Sutton Hoo in 1939.



Anglo-Saxon Brooch



Shoulder clasps



Gold belt buckle



Purse clasp



Coins



Anglo-Saxon Coin with King Æthelræd



Anglo-Saxon Coin with King Edwin



Original pieces of helmet on resin mount.
Reconstruction of helmet.



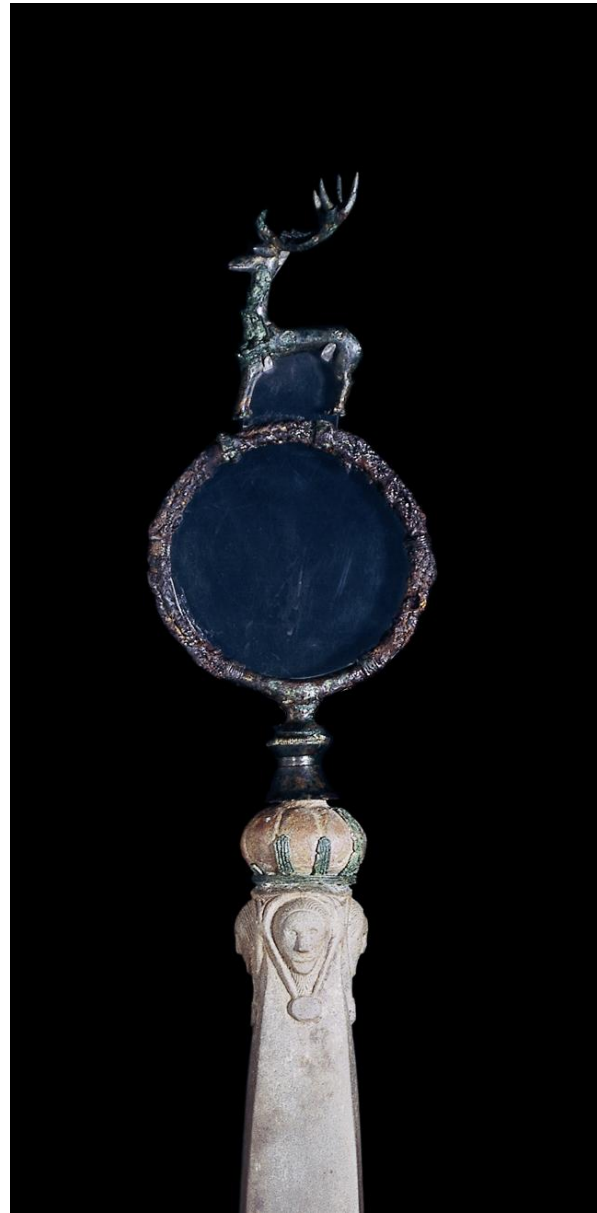
Reconstruction of shield with original boss and shield mounts.



Sutton Hoo Shield Mount



Sceptre –
full view and
detail of top
section.





Reconstruction of drinking horns with original rims and terminals



Bronze hanging bowl



Silver bowls and spoons



Reconstruction of lyre

Find out more about the Sutton Hoo ship burial

Visit the main Museum website

www.britishmuseum.org

Use Explore to look at objects from Sutton Hoo

www.britishmuseum.org/explore/introduction.aspx

Learn more about Sutton Hoo and the Anglo-Saxons

www.ancientcivilizations.co.uk

**THE
BRITISH
MUSEUM**

Great Russell Street, London WC1B 3DG

📍 Tottenham Court Road, Holborn, Russell Square

Telephone +44 (0)20 7323 8510

learning@britishmuseum.org

www.britishmuseum.org

Some slides and information
added by Mrs. Douglas